

# Lintel Comparison Chart

## CAVITY WALL 100mm Inner Leaf



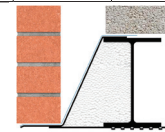
STANDARD DUTY LOADING					
Cavity Size (mm)	70 - 85	90 - 105	110 - 125	130 - 145	150 - 165
<b>IG</b>	L1/S 75	L1/S 100	L1/S 110	L1/S 130	L1/S 150
Keystone	S/K-70	S/K-90	S/K-110	S/K-130	S/K-150
Birtley	CB70	CB90	CB110	CB125	CB150
Catnic	CG70/100	CG90/100	CG110/100	CG130/100	CG150/100

HEAVY DUTY LOADING					
Cavity Size (mm)	70 - 85	90 - 105	110 - 125	130 - 145	150 - 165
<b>IG</b>	L1/HD 75	L1/HD 100	L1/HD 110	L1/HD 130	L1/HD 150
Keystone	HD/K-70	HD/K-90	HD/K-110	HD/K-130	HD/K-150
Birtley	CB70HD	CB90HD	CB110HD	CB125HD	CB150HD
Catnic	CH70/100	CH90/100	CH110/100	CH130/100	CH150/100

EXTRA HEAVY DUTY LOADING					
Cavity Size (mm)	70 - 85	90 - 105	110 - 125	130 - 145	150 - 165
<b>IG</b>	L5/75	L5/100	L5/110	L5/130	L5/150
Keystone	CFS/K-70	CFS/K-90	CFS/K-110	CFS/K-130	CFS/K-150
Birtley	HS70	HS90	HS110	HS125	HS150
Catnic	CX70/100	CX90/100	CX110/100	CX130/100	CX150/100

EXTREME LOADING					
Cavity Size (mm)	70 - 85	90 - 105	110 - 125	130 - 145	150 - 165
<b>IG</b>	L6/75	L6/100	L6/110	L6/130	L6/150
Keystone	X/K-70	X/K-90	X/K-110	X/K-130	X/K-150
Birtley	SX70	SX90	SX110	SX125	SX150
Catnic	CXL265	CXL290	CXL310	CXL330	CXL350

## CAVITY WALL Wide Inner Leaf (125-150mm)



Cavity Size (mm)	70 - 85	90 - 105	110 - 125	130 - 145	150 - 165
<b>IG</b>	L1/S 75 WIL	L1/S 100 WIL	L1/S 110 WIL	L1/S 130 WIL	L1/S 150 WIL
Keystone	S/K-70 WIL	S/K-90 WIL	S/K-110 WIL	S/K-130 WIL	S/K-150 WIL
Birtley	CB70/130	CB90/130	CB110/130	CB125/130	CB150/130
Catnic	CG70/125	CG90/125	CG110/125	CG130/125	CG150/125

Cavity Size (mm)	70 - 85	90 - 105	110 - 125	130 - 145	150 - 165
<b>IG</b>	L1/HD 75 WIL	L1/HD 100 WIL	L1/HD 110 WIL	L1/HD 130 WIL	L1/HD 150 WIL
Keystone	HD/K-70 WIL	HD/K-90 WIL	HD/K-110 WIL	HD/K-130 WIL	HD/K-150 WIL
Birtley	CB70HD	CB90HD	-	-	-
Catnic	CH70/100	CH90/100	-	-	-

Cavity Size (mm)	70 - 85	90 - 105	110 - 125	130 - 145	150 - 165
<b>IG</b>	L5/75 WIL	L5/100 WIL	L5/110 WIL	L5/130 WIL	L5/150 WIL
Keystone	CFS/K-70 WIL	CFS/K-90 WIL	CFS/K-110 WIL	CFS/K-130 WIL	CFS/K-150 WIL
Birtley	HS70/130	HS90/130	HS110/130	HS125/130	HS150/130
Catnic	CX70/125	CX90/125	CX110/125	CX130/125	CX150/125

Cavity Size (mm)	70 - 85	90 - 105	110 - 125	130 - 145	150 - 165
<b>IG</b>	L6/75 WIL	L6/100 WIL	L6/110 WIL	L6/130 WIL	L6/150 WIL
Keystone	X/K-70 WIL	X/K-90 WIL	X/K-110 WIL	X/K-130 WIL	X/K-150 WIL
Birtley	XHD70/130	XHD90/130	XHD110/130	XHD125/130	XHD150/130
Catnic	CXL290	CXL310	CXL330	CXL350	-

## CAVITY WALL Wide Outer Leaf (125-150mm)



Cavity Size (mm)	70 - 85	90 - 105	110 - 125	130 - 145	150 - 165
<b>IG</b>	L1/S 75 WOL	L1/S 100 WOL	L1/S 110 WOL	L1/S 130 WOL	L1/S 150 WOL
Keystone	S/K-70 WOL	S/K-90 WOL	S/K-110 WOL	S/K-130 WOL	S/K-150 WOL
Birtley	CB150/70/100	CB150/90/100	-	-	-
Catnic	CN99/124C	CN99/1644C	-	-	-

## EAVES LINTELS



STANDARD EAVES		WIDE INNER LEAF		
Cavity Size (mm)	50 - 85	90 - 125	50 - 85	90 - 125
<b>IG</b>	L1/E 50	L1/E 100	L1/E 50 WIL	L1/E 100 WIL
Keystone	EL/K-50	EL/K-90	EL/K-50 WIL	EL/K-90 WIL
Birtley	CBEV50	CBEV90	CBEV50/130	CBEV90/130
Catnic	CGE50/100	CGE90/100	CGE50/125	CGE90/125

## TIMBER FRAME



STANDARD LOADING			
Cavity Size (mm)	50 - 65	70 - 85	90 - 105
<b>IG</b>	L7/50	L7/75	L7/100
Keystone	T/K-50	T/K-70	T/K-90
Birtley	TF50	TF70	TF90
Catnic	CTF5	CTF7	CTF9

## SINGLE LEAF



STANDARD LOADING		
IG	L10	L11
Keystone	SB/K	SL/K
Birtley	LA	EV100
Catnic	ANG	CCS

## SOLID WALL

STANDARD DUTY LOADING			
IG	INT100	L9	I BEAM (3C)
Keystone	INT/K-100	SW/K	IB/K (3C)
Birtley	INT100	OB190	DC200
Catnic	CN102	CN50, 51	-



## BOX LINTELS

STANDARD DUTY LOADING				HEAVY DUTY LOADING			
IG	BOX 75	BOX 100	BOX 140	BOX 200	HD BOX 100	HD BOX 140	HD BOX 200
Keystone	BOX/K-75	BOX/K-100	BOX/K-150	HD BOX/K-200	HD BOX/K-100	HD BOX/K-150	HD BOX/K-200
Birtley	INT100HD	SB100	SB140	SBL200	SB100HD	SB140HD	SBL200HD
Catnic	CN100	CNS5, 6X	CN56X, 66X	CN71, 81	CN5XC, 6XC	CN66XC	CN71C, 81C



BOX 100

BOX 140

BOX 200

HD BOX 200